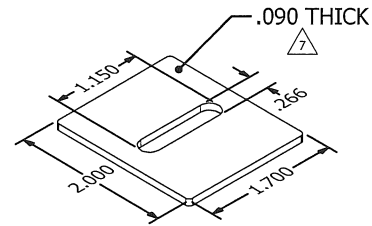
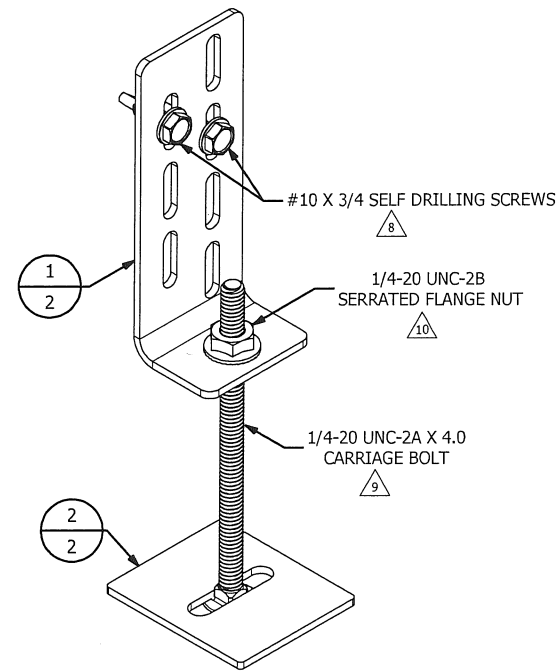


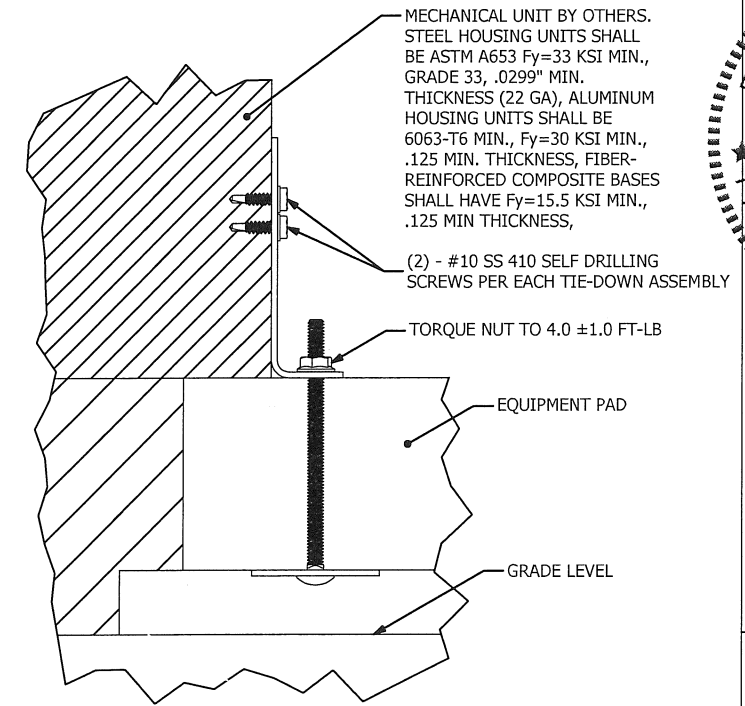
1 TIE-DOWN BRACKET
2 1:2 SCALE ISOMETRIC



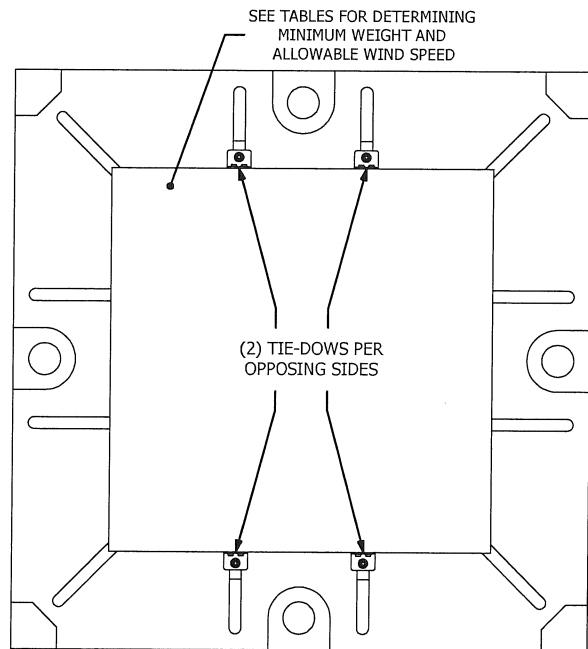
2 BOLT RETAINER
2 1:2 SCALE ISOMETRIC



3 TIE-DOWN ASSEMBLY
2 1:2 SCALE ISOMETRIC

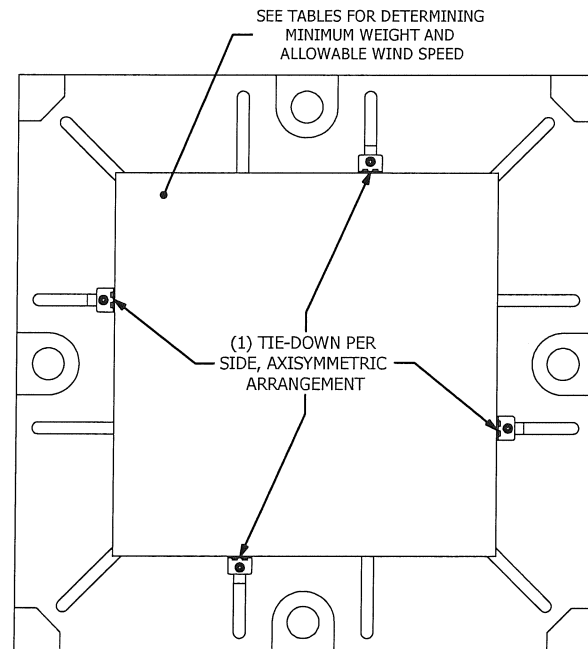


4 UNIT TIE-DOWN DETAIL
2 1:3 SCALE DETAIL



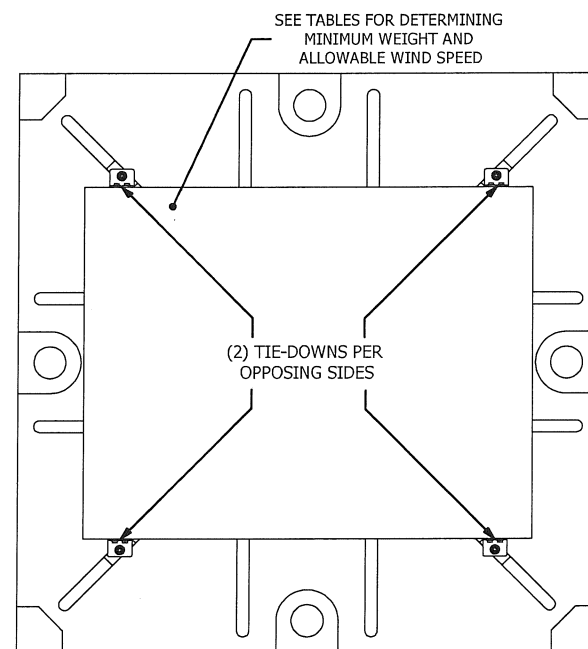
1. TIE-DOWN CONFIGURATION APPLICABLE TO SQUARE, RECTANGULAR OR ROUND† UNITS.
2. TIE-DOWN CONFIGURATION APPLICABLE FOR USE WITH EQUIPMENT PAD MODELS QT8036 AND QT8040.

5 TIE-DOWN CONFIGURATION
2 1:16 SCALE TOP VIEW



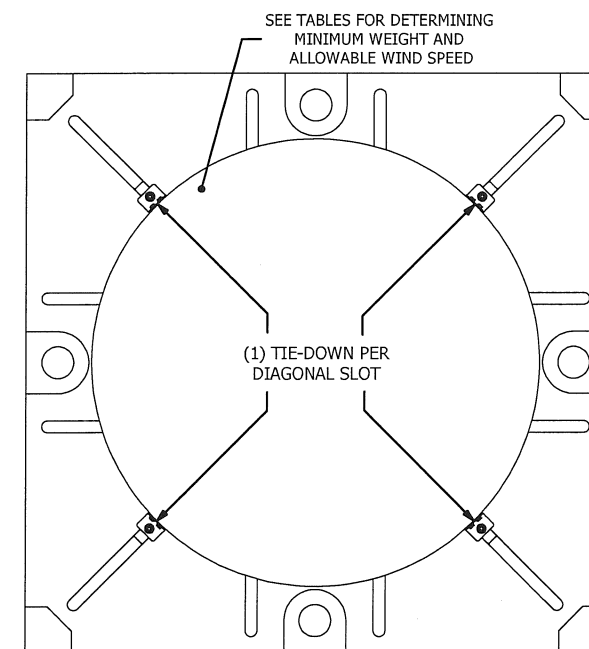
1. ALTERNATE TIE-DOWN CONFIGURATION APPLICABLE TO SQUARE, RECTANGULAR OR ROUND† UNITS.
2. TIE-DOWN CONFIGURATION APPLICABLE FOR USE WITH EQUIPMENT PAD MODELS QT8036 AND QT8040.

6 TIE-DOWN CONFIG. - ALT.
2 1:16 SCALE TOP VIEW



1. ALTERNATE TIE-DOWN CONFIGURATION USING DIAGONAL SLOTS APPLICABLE FOR RECTANGULAR UNITS.
2. TIE-DOWN CONFIGURATION APPLICABLE FOR USE WITH EQUIPMENT PAD MODELS QT8036 AND QT8040.

7 TIE-DOWN CONFIG. - ALT. RECT
2 1:16 SCALE TOP VIEW



1. ALTERNATE TIE-DOWN CONFIGURATION USING DIAGONAL SLOTS APPLICABLE FOR ROUND† UNITS OR SQUARE UNITS WITH ROUNDED CORNERS.
2. TIE-DOWN CONFIGURATION APPLICABLE FOR USE WITH EQUIPMENT PAD MODELS QT8036 AND QT8040.

8 TIE-DOWN CONFIG. - ALT. RND
2 1:16 SCALE TOP VIEW

† ROUND UNITS MUST ASSUME LENGTH (Lu) AND WIDTH (Wu) USED IN TABLES TO BE EQUAL TO DIAMETER OF UNIT.

DR. ROBERT P. SCARINGE, P.E.
FL REG. 31527

ROBERT P. SCARINGE
LICENSE
No. 31527
STATE OF FLORIDA
APR 30 2018
PROFESSIONAL ENGINEER

Solutions Through Advanced Technology
MAINSTREAM
ENGINEERING

200 YELLOW PLACE
ROCKLEDGE, FL 32955
PH: (321) 631-3550
WWW.MAINSTREAM-ENGR.COM

QWIKHURRICANE™ PAD
EQUIPMENT TIE-DOWN SYSTEM FOR HVHZ

FBC 6TH EDITION (2017) PRODUCT APPROVAL
FL# 25896.1

REV	REMARKS	DRWN	CHKD	DATE
A	INITIAL RELEASE	A. CARPENTER	R. SCARINGE	04/30/2018

NOTICE: THIS DOCUMENT IS THE PROPERTY OF MAINSTREAM ENGINEERING CORPORATION AND SHALL NOT BE REPRODUCED IN WHOLE OR PART WITHOUT WRITTEN CONSENT OF MAINSTREAM ENGINEERING CORPORATION. ALTERATIONS, ADDITIONS, HIGHLIGHTING, OR OTHER MARKINGS TO THIS DOCUMENT ARE NOT PERMITTED AND INVALIDATE THIS CERTIFICATION.

QT8036 EQUIPMENT PAD - ANCHORED

TABLE 1. MINIMUM WEIGHT OF EQUIPMENT REQUIRED FOR VULT = 130 MPH, 150 MPH, AND 180 MPH (EXPOSURE 'C') USING QT8036 EQUIPMENT PAD (FOR USE WITH RISK CATEGORY II STRUCTURE IN THE HIGH-VELOCITY HURRICANE ZONE)

EQUIPMENT DIMENSIONS			V _{ULT} = 130 MPH ALLOWABLE WIND SPEED (35.0 PSF ALLOWABLE WIND PRESSURE)							V _{ULT} = 150 MPH ALLOWABLE WIND SPEED (46.0 PSF ALLOWABLE WIND PRESSURE)							V _{ULT} = 180 MPH ALLOWABLE WIND SPEED (66.3 PSF ALLOWABLE WIND PRESSURE)						
			MIN. WEIGHT OF EQUIPMENT	.6 X (UNIT + PAD)	DEAD LOAD MOMENT	F _{WIND,TOT}	F _{WIND,UNIT}	.6 X (WIND MOMENT)	DESIGN CHECK	MIN. WEIGHT OF EQUIPMENT	.6 X (UNIT + PAD)	DEAD LOAD MOMENT	F _{WIND,TOT}	F _{WIND,UNIT}	.6 X (WIND MOMENT)	DESIGN CHECK	MIN. WEIGHT OF EQUIPMENT	.6 X (UNIT + PAD)	DEAD LOAD MOMENT	F _{WIND,TOT}	F _{WIND,UNIT}	.6 X (WIND MOMENT)	DESIGN CHECK
L _u	W _u	H _u	LB	LB	FT-LB	LB	LB	FT-LB	-	LB	LB	FT-LB	LB	LB	FT-LB	-	LB	LB	FT-LB	LB	LB	FT-LB	-
22	22	26	0	97.2	145.8	171.7	137.2	120.1	OK FOR 130 MPH	17	107.4	161.1	228.7	182.7	159.9	OK FOR 150 MPH	95	154.2	231.3	329.3	263.0	230.2	OK FOR 180 MPH
22	22	30	10	103.2	154.8	192.9	158.3	153.8	OK FOR 130 MPH	67	137.4	206.1	256.8	210.8	204.8	OK FOR 150 MPH	167	197.4	296.1	369.7	303.5	295.0	OK FOR 180 MPH
24	24	24	0	97.2	145.8	172.7	138.2	114.0	OK FOR 130 MPH	8	102.0	153.0	229.9	183.9	151.8	OK FOR 150 MPH	82	146.4	219.6	331.1	264.9	218.5	OK FOR 180 MPH
24	24	26	0	97.2	145.8	184.2	149.7	130.7	OK FOR 130 MPH	32	116.4	174.6	245.3	199.3	174.0	OK FOR 150 MPH	117	167.4	251.1	353.2	287.0	250.5	OK FOR 180 MPH
24	24	28	4	99.6	149.4	195.7	161.2	148.5	OK FOR 130 MPH	59	132.6	198.9	260.6	214.6	197.7	OK FOR 150 MPH	155	190.2	285.3	375.2	309.0	284.7	OK FOR 180 MPH
24	24	30	25	112.2	168.3	207.2	172.7	167.5	OK FOR 130 MPH	87	149.4	224.1	275.9	229.9	223.0	OK FOR 150 MPH	196	214.8	322.2	397.3	331.1	321.2	OK FOR 180 MPH
24	24	32	48	126.0	189.0	218.8	184.2	187.7	OK FOR 130 MPH	117	167.4	251.1	291.2	245.3	249.9	OK FOR 150 MPH	239	240.6	360.9	419.4	353.2	359.8	OK FOR 180 MPH
24	24	34	71	139.8	209.7	230.3	195.7	209.0	OK FOR 130 MPH	148	186.0	279.0	306.6	260.6	278.2	OK FOR 150 MPH	284	267.6	401.4	441.5	375.2	400.6	OK FOR 180 MPH
24	24	36	96	154.8	232.2	241.8	207.2	231.4	OK FOR 130 MPH	181	205.8	308.7	321.9	275.9	308.1	OK FOR 150 MPH	332	296.4	444.6	463.5	397.3	443.7	OK FOR 180 MPH
24	24	38	122	170.4	255.6	253.3	218.8	255.0	OK FOR 130 MPH	216	226.8	340.2	337.2	291.2	339.5	OK FOR 150 MPH	382	326.4	489.6	485.6	419.4	488.9	OK FOR 180 MPH
24	24	40	150	187.2	280.8	264.8	230.3	279.8	OK FOR 130 MPH	253	249.0	373.5	352.6	306.6	372.5	OK FOR 150 MPH							
26	26	26	0	97.2	145.8	196.7	162.1	141.3	OK FOR 130 MPH	48	126.0	189.0	261.9	215.9	188.1	OK FOR 150 MPH	140	181.2	271.8	377.1	310.9	270.9	OK FOR 180 MPH
26	26	28	17	107.4	161.1	209.2	174.6	160.6	OK FOR 130 MPH	77	143.4	215.1	278.5	232.5	213.8	OK FOR 150 MPH	181	205.8	308.7	401.0	334.8	307.9	OK FOR 180 MPH
26	26	30	40	121.2	181.8	221.6	187.1	181.2	OK FOR 130 MPH	107	161.4	242.1	295.1	249.1	241.2	OK FOR 150 MPH	225	232.2	348.3	424.9	358.7	347.4	OK FOR 180 MPH
26	26	32	65	136.2	204.3	234.1	199.6	203.0	OK FOR 130 MPH	139	180.6	270.9	311.7	265.7	270.3	OK FOR 150 MPH	271	259.8	389.7	448.8	382.6	389.2	OK FOR 180 MPH
26	26	34	90	151.2	226.8	246.6	212.0	226.1	OK FOR 130 MPH	173	201.0	301.5	328.3	282.3	301.0	OK FOR 150 MPH	321	289.8	434.7	472.7	406.5	433.5	OK FOR 180 MPH
26	26	36	117	167.4	251.1	259.1	224.5	250.4	OK FOR 130 MPH	209	222.6	333.9	344.9	298.9	333.4	OK FOR 150 MPH	372	320.4	480.6	496.6	430.4	480.1	OK FOR 180 MPH
26	26	38	146	184.8	277.2	271.5	237.0	276.0	OK FOR 130 MPH	247	245.4	368.1	361.5	315.5	367.4	OK FOR 150 MPH							
26	26	40	175	202.2	303.3	284.0	249.5	302.8	OK FOR 130 MPH	287	269.4	404.1	378.1	332.1	403.1	OK FOR 150 MPH							
26	26	42	207	221.4	332.1	296.5	261.9	330.9	OK FOR 130 MPH	328	294.0	441.0	394.7	348.7	440.5	OK FOR 150 MPH							
28	28	26	8	102.0	153.0	209.2	174.6	151.9	OK FOR 130 MPH	64	135.6	203.4	278.5	232.5	202.2	OK FOR 150 MPH	163	195.0	292.5	401.0	334.8	291.2	OK FOR 180 MPH
28	28	28	31	115.8	173.7	222.6	188.1	172.7	OK FOR 130 MPH	94	153.6	230.4	296.4	250.4	229.9	OK FOR 150 MPH	207	221.4	332.1	426.7	360.5	331.1	OK FOR 180 MPH
28	28	30	56	130.8	196.2	236.0	201.5	194.9	OK FOR 130 MPH	127	173.4	260.1	314.2	268.2	259.4	OK FOR 150 MPH	254	249.6	374.4	452.5	386.3	373.6	OK FOR 180 MPH
28	28	32	82	146.4	219.6	249.5	214.9	218.4	OK FOR 130 MPH	162	194.4	291.6	332.1	286.1	290.7	OK FOR 150 MPH	304	279.6	419.4	478.3	412.0	418.7	OK FOR 180 MPH
28	28	34	109	162.6	243.9	262.9	228.4	243.2	OK FOR 130 MPH	199	216.6	324.9	350.0	304.0	323.8	OK FOR 150 MPH	357	311.4	467.1	504.0	437.8	466.3	OK FOR 180 MPH
28	28	36	138	180.0	270.0	276.3	241.8	269.4	OK FOR 130 MPH	238	240.0	360.0	367.9	321.9	358.7	OK FOR 150 MPH							
28	28	38	169	198.6	297.9	289.8	255.2	297.0	OK FOR 130 MPH	278	264.0	396.0	385.8	339.8	395.3	OK FOR 150 MPH							
28	28	40	201	217.8	326.7	303.2	268.6	325.8	OK FOR 130 MPH	321	289.8	434.7	403.7	357.7	433.8	OK FOR 150 MPH							
28	28	42	235	238.2	357.3	316.6	282.1	356.1	OK FOR 130 MPH	366	316.8	475.2	421.5	375.5	474.0	OK FOR 150 MPH							
30	30	26	20	109.2	163.8	221.6	187.1	162.5	OK FOR 130 MPH	79	144.6	216.9	295.1	249.1	216.3	OK FOR 150 MPH	185	208.2	312.3	424.9	358.7	311.5	OK FOR 180 MPH
30	30	28	44	123.6	185.4	236.0	201.5	184.8	OK FOR 130 MPH	112	164.4	246.6	314.2	268.2	246.0	OK FOR 150 MPH	233	237.0	355.5	452.5	386.3	354.3	OK FOR 180 MPH
30	30	30	71	139.8	209.7	250.4	215.9	208.5	OK FOR 130 MPH	147	185.4	278.1	333.4	287.4	277.6	OK FOR 150 MPH	283	267.0	400.5	480.1	413.9	399.8	OK FOR 180 MPH
30	30	32	99	156.6	234.9	264.8	230.3	233.7	OK FOR 130 MPH	185	208.2	312.3	352.6	306.6	311.2	OK FOR 150 MPH	337	299.4	449.1	507.7	441.5	448.1	OK FOR 180 MPH
30	30	34	128	174.0	261.0	279.2	244.7	260.3	OK FOR 130 MPH	224	231.6	347.4	371.7	325.7	346.6	OK FOR 150 MPH	394	333.6	500.4	535.3	469.1	499.1	OK FOR 180 MPH
30	30	36	159	192.6	288.9	293.6	259.1	288.4	OK FOR 130 MPH	266	256.8	385.2	390.9	344.9	384.0	OK FOR 150 MPH							
30	30	38	192	212.4	318.6	308.0	273.4	317.9	OK FOR 130 MPH	309	282.6	423.9	410.0	364.1	423.3	OK FOR 150 MPH							
30	30	40	227	233.4	350.1	322.4	287.8	348.9	OK FOR 130 MPH	355	310.2	465.3	429.2	383.2	464.5	OK FOR 150 MPH							
30	30	42	263	255.0	382.5	336.8	302.2	381.2	OK FOR 130 MPH														
30	30	44	300	277.2	415.8	351.2	316.6	415.1	OK FOR 130 MPH														
30	30	46	339	300.6	450.9	365.6	331.0	450.3	OK FOR 130 MPH														
32	32	28	58	132.0	198.0	249.5	214.9	196.9	OK FOR 130 MPH	130	175.2	262.8	332.1	286.1	262.1	OK FOR 150 MPH	258	252.0	378.0	478.3	412.0	377.5	OK FOR 180 MPH
32	32	30	86	148.8	223.2	264.8	230.3	222.2	OK FOR 130 MPH	168	198.0	297.0	352.6	306.6	295.8	OK FOR 150 MPH	312	284.4	426.6	507.7	441.5	426.0	OK FOR 180 MPH
32	32	32	116	166.8	250.2	280.2	245.6	249.1	OK FOR 130 MPH	207	221.4	332.1	373.0	327.0	331.6	OK FOR 150 MPH	370	319.2	478.8	537.1	470.9	477.5	OK FOR 180 MPH
32	32	34	147	185.4	278.1	295.5	261.0	277.5	OK FOR 130 MPH	249	246.6	369.9	393.4	347.4	369.4	OK FOR 150 MPH							
32	32	36	181	205.8	308.7	310.9	276.3	307.4	OK FOR 130 MPH	294	273.6	410.4	413.9	367.9	409.3	OK FOR 150 MPH							
32	32	38	216	226.8	340.2	326.2	291.7	338.9	OK FOR 130 MPH	340	301.2	451.8	434.3	388.3	451.2	OK FOR 150 MPH							
32	32	40	252	248.4	372.6	341.6	307.0	371.9	OK FOR 130 MPH	389	330.6	495.9	454.7	408.8	495.1	OK FOR 150 MPH							
32	32	42	291	271.8	407.7	356.9	322.4	406.4	OK FOR 130 MPH														
32	32	44	331	295.8	443.7	372.3	337.7	442.5	OK FOR 130 MPH														
32	32	46	372	320.4	480.6	387.6	353.1	480.1	OK FOR 130 MPH														

PROCEDURE FOR USE OF TABLE 1 FOR EQUIPMENT PAD MODEL QT8036:

1. DETERMINE SIZE AND WEIGHT OF EQUIPMENT TO BE INSTALLED.
2. FIND APPROPRIATE EQUIPMENT SIZE IN TABLE. (IF UNIT SIZE IS BETWEEN LISTED DIMENSIONS, USE NEXT LARGER SIZE IN TABLE.)
3. FOR A GIVEN WIND SPEED, DETERMINE IF WEIGHT OF EQUIPMENT TO BE INSTALLED MEETS MIN. WEIGHT OF EQUIPMENT REQUIREMENT. IF SO, DESIGN IS OK FOR GIVEN WIND SPEED.

NOTE: IF EQUIPMENT DOES NOT MEET MIN. WEIGHT OF EQUIPMENT REQUIREMENT, OR IF NOTED OTHERWISE, ANCHORS ARE REQUIRED - SEE TABLE 2.

DR. ROBERT P. SCARINGE, P.E.
FL REG. 31527

MAINSTREAM ENGINEER
Solutions Through Advanced Technology

200 YELLOW PLACE
ROCKLEDGE, FL 32955
PH: (321) 631-3550
WWW.MAINSTREAM-ENGR.COM

QWIKHURRICANE™ PAD
EQUIPMENT TIE-DOWN SYSTEM FOR HVHZ

FBC 6TH EDITION (2017) PRODUCT APPROVAL
FL# 25896.1

REV	REMARKS	DRWN	CHKD	DATE
A	INITIAL RELEASE	A. CARPENTER	R. SCARINGE	04/30/2018

NOTICE: THIS DOCUMENT IS THE PROPERTY OF MAINSTREAM ENGINEERING CORPORATION AND SHALL NOT BE REPRODUCED IN WHOLE OR PART WITHOUT WRITTEN CONSENT OF MAINSTREAM ENGINEERING CORPORATION. ALTERATIONS, ADDITIONS, HIGHLIGHTING, OR OTHER MARKINGS TO THIS DOCUMENT ARE NOT PERMITTED AND INVALIDATE THIS CERTIFICATION.

QT8036 EQUIPMENT PAD - ANCHORED

TABLE 2. MINIMUM WEIGHT OF EQUIPMENT REQUIRED FOR V_{ULT} = 130 MPH, 150 MPH, AND 180 MPH (EXPOSURE 'C') USING QT8036 EQUIPMENT PAD AND ANCHORS (FOR USE WITH RISK CATEGORY II STRUCTURE IN THE HIGH-VELOCITY HURRICANE ZONE)

EQUIPMENT DIMENSIONS			V _{ULT} = 130 MPH ALLOWABLE WIND SPEED (35.0 PSF ALLOWABLE WIND PRESSURE) 2 ANCHORS REQUIRED							V _{ULT} = 150 MPH ALLOWABLE WIND SPEED (46.0 PSF ALLOWABLE WIND PRESSURE) 2 ANCHORS REQUIRED							V _{ULT} = 180 MPH ALLOWABLE WIND SPEED (66.3 PSF ALLOWABLE WIND PRESSURE) 2 ANCHORS REQUIRED							V _{ULT} = 180 MPH ALLOWABLE WIND SPEED (66.3 PSF ALLOWABLE WIND PRESSURE) 4 ANCHORS REQUIRED						
L _u	W _u	H _u	MIN. WEIGHT OF EQUIPMENT	.6 X (UNIT + PAD)	DEAD LOAD + ANCHOR MOMENT	F _{WIND, TOT}	F _{WIND, UNIT}	.6 X (WIND MOMENT)	DESIGN CHECK	MIN. WEIGHT OF EQUIPMENT	.6 X (UNIT + PAD)	DEAD LOAD + ANCHOR MOMENT	F _{WIND, TOT}	F _{WIND, UNIT}	.6 X (WIND MOMENT)	DESIGN CHECK	MIN. WEIGHT OF EQUIPMENT	.6 X (UNIT + PAD)	DEAD LOAD + ANCHOR MOMENT	F _{WIND, TOT}	F _{WIND, UNIT}	.6 X (WIND MOMENT)	DESIGN CHECK	MIN. WEIGHT OF EQUIPMENT	.6 X (UNIT + PAD)	DEAD LOAD + ANCHOR MOMENT	F _{WIND, TOT}	F _{WIND, UNIT}	.6 X (WIND MOMENT)	DESIGN CHECK
IN	IN	IN	LB	LB	FT-LB	LB	LB	FT-LB	-	LB	LB	FT-LB	LB	LB	FT-LB	-	LB	LB	FT-LB	LB	LB	FT-LB	-	LB	LB	FT-LB	LB	LB	FT-LB	-
22	22	26	0	97.2	514.8	171.7	137.2	120.1	OK FOR 130 MPH	0	97.2	514.8	228.7	182.7	159.9	OK FOR 150 MPH	0	97.2	514.8	329.3	263.0	230.2	OK FOR 180 MPH	0	97.2	883.8	329.3	263.0	230.2	OK FOR 180 MPH
22	22	30	0	97.2	514.8	192.9	158.3	153.8	OK FOR 130 MPH	0	97.2	514.8	256.8	210.8	204.8	OK FOR 150 MPH	0	97.2	514.8	369.7	303.5	295.0	OK FOR 180 MPH	0	97.2	883.8	369.7	303.5	295.0	OK FOR 180 MPH
24	24	24	0	97.2	514.8	172.7	138.2	114.0	OK FOR 130 MPH	0	97.2	514.8	229.9	183.9	151.8	OK FOR 150 MPH	0	97.2	514.8	331.1	264.9	218.5	OK FOR 180 MPH	0	97.2	883.8	331.1	264.9	218.5	OK FOR 180 MPH
24	24	26	0	97.2	514.8	184.2	149.7	130.7	OK FOR 130 MPH	0	97.2	514.8	245.3	199.3	174.0	OK FOR 150 MPH	0	97.2	514.8	353.2	287.0	250.5	OK FOR 180 MPH	0	97.2	883.8	353.2	287.0	250.5	OK FOR 180 MPH
24	24	28	0	97.2	514.8	195.7	161.2	148.5	OK FOR 130 MPH	0	97.2	514.8	260.6	214.6	197.7	OK FOR 150 MPH	0	97.2	514.8	375.2	309.0	284.7	OK FOR 180 MPH	0	97.2	883.8	375.2	309.0	284.7	OK FOR 180 MPH
24	24	30	0	97.2	514.8	207.2	172.7	167.5	OK FOR 130 MPH	0	97.2	514.8	275.9	229.9	223.0	OK FOR 150 MPH	0	97.2	514.8	397.3	331.1	321.2	OK FOR 180 MPH	0	97.2	883.8	397.3	331.1	321.2	OK FOR 180 MPH
24	24	32	0	97.2	514.8	218.8	184.2	187.7	OK FOR 130 MPH	0	97.2	514.8	291.2	245.3	249.9	OK FOR 150 MPH	0	97.2	514.8	419.4	353.2	359.8	OK FOR 180 MPH	0	97.2	883.8	419.4	353.2	359.8	OK FOR 180 MPH
24	24	34	0	97.2	514.8	230.3	195.7	209.0	OK FOR 130 MPH	0	97.2	514.8	306.6	260.6	278.2	OK FOR 150 MPH	0	97.2	514.8	441.5	375.2	400.6	OK FOR 180 MPH	0	97.2	883.8	441.5	375.2	400.6	OK FOR 180 MPH
24	24	36	0	97.2	514.8	241.8	207.2	231.4	OK FOR 130 MPH	0	97.2	514.8	321.9	275.9	308.1	OK FOR 150 MPH	0	97.2	514.8	463.5	397.3	443.7	OK FOR 180 MPH	0	97.2	883.8	463.5	397.3	443.7	OK FOR 180 MPH
24	24	38	0	97.2	514.8	253.3	218.8	255.0	OK FOR 130 MPH	0	97.2	514.8	337.2	291.2	339.5	OK FOR 150 MPH	0	97.2	514.8	485.6	419.4	488.9	OK FOR 180 MPH	0	97.2	883.8	485.6	419.4	488.9	OK FOR 180 MPH
24	24	40	0	97.2	514.8	264.8	230.3	279.8	OK FOR 130 MPH	0	97.2	514.8	352.6	306.6	372.5	OK FOR 150 MPH	25	112.2	537.3	507.7	441.5	536.4	OK FOR 180 MPH	0	97.2	883.8	507.7	441.5	536.4	OK FOR 180 MPH
26	26	26	0	97.2	514.8	196.7	162.1	141.3	OK FOR 130 MPH	0	97.2	514.8	261.9	215.9	188.1	OK FOR 150 MPH	0	97.2	514.8	377.1	310.9	270.9	OK FOR 180 MPH	0	97.2	883.8	377.1	310.9	270.9	OK FOR 180 MPH
26	26	28	0	97.2	514.8	209.2	174.6	160.6	OK FOR 130 MPH	0	97.2	514.8	278.5	232.5	213.8	OK FOR 150 MPH	0	97.2	514.8	401.0	334.8	307.9	OK FOR 180 MPH	0	97.2	883.8	401.0	334.8	307.9	OK FOR 180 MPH
26	26	30	0	97.2	514.8	221.6	187.1	181.2	OK FOR 130 MPH	0	97.2	514.8	295.1	249.1	241.2	OK FOR 150 MPH	0	97.2	514.8	424.9	358.7	347.4	OK FOR 180 MPH	0	97.2	883.8	424.9	358.7	347.4	OK FOR 180 MPH
26	26	32	0	97.2	514.8	234.1	199.6	203.0	OK FOR 130 MPH	0	97.2	514.8	311.7	265.7	270.3	OK FOR 150 MPH	0	97.2	514.8	448.8	382.6	389.2	OK FOR 180 MPH	0	97.2	883.8	448.8	382.6	389.2	OK FOR 180 MPH
26	26	34	0	97.2	514.8	246.6	212.0	226.1	OK FOR 130 MPH	0	97.2	514.8	328.3	282.3	301.0	OK FOR 150 MPH	0	97.2	514.8	472.7	406.5	433.5	OK FOR 180 MPH	0	97.2	883.8	472.7	406.5	433.5	OK FOR 180 MPH
26	26	36	0	97.2	514.8	259.1	224.5	250.4	OK FOR 130 MPH	0	97.2	514.8	344.9	298.9	333.4	OK FOR 150 MPH	0	97.2	514.8	496.6	430.4	480.1	OK FOR 180 MPH	0	97.2	883.8	496.6	430.4	480.1	OK FOR 180 MPH
26	26	38	0	97.2	514.8	271.5	237.0	276.0	OK FOR 130 MPH	0	97.2	514.8	361.5	315.5	367.4	OK FOR 150 MPH	17	107.4	530.1	520.6	454.3	529.1	OK FOR 180 MPH	0	97.2	883.8	520.6	454.3	529.1	OK FOR 180 MPH
26	26	40	0	97.2	514.8	284.0	249.5	302.8	OK FOR 130 MPH	0	97.2	514.8	378.1	332.1	403.1	OK FOR 150 MPH	74	141.6	581.4	544.5	478.3	580.5	OK FOR 180 MPH	0	97.2	883.8	544.5	478.3	580.5	OK FOR 180 MPH
26	26	42	0	97.2	514.8	296.5	261.9	330.9	OK FOR 130 MPH	0	97.2	514.8	394.7	348.7	440.5	OK FOR 150 MPH	134	177.6	635.4	568.4	502.2	634.3	OK FOR 180 MPH	0	97.2	883.8	568.4	502.2	634.3	OK FOR 180 MPH
28	28	26	0	97.2	514.8	209.2	174.6	151.9	OK FOR 130 MPH	0	97.2	514.8	278.5	232.5	213.8	OK FOR 150 MPH	0	97.2	514.8	401.0	334.8	307.9	OK FOR 180 MPH	0	97.2	883.8	401.0	334.8	307.9	OK FOR 180 MPH
28	28	28	0	97.2	514.8	222.6	188.1	172.7	OK FOR 130 MPH	0	97.2	514.8	296.4	250.4	229.9	OK FOR 150 MPH	0	97.2	514.8	426.7	360.5	331.1	OK FOR 180 MPH	0	97.2	883.8	426.7	360.5	331.1	OK FOR 180 MPH
28	28	30	0	97.2	514.8	236.0	201.5	194.9	OK FOR 130 MPH	0	97.2	514.8	314.2	268.2	259.4	OK FOR 150 MPH	0	97.2	514.8	452.5	386.3	373.6	OK FOR 180 MPH	0	97.2	883.8	452.5	386.3	373.6	OK FOR 180 MPH
28	28	32	0	97.2	514.8	249.5	214.9	218.4	OK FOR 130 MPH	0	97.2	514.8	332.1	286.1	290.7	OK FOR 150 MPH	0	97.2	514.8	478.3	412.0	418.7	OK FOR 180 MPH	0	97.2	883.8	478.3	412.0	418.7	OK FOR 180 MPH
28	28	34	0	97.2	514.8	262.9	228.4	243.2	OK FOR 130 MPH	0	97.2	514.8	350.0	304.0	323.8	OK FOR 150 MPH	0	97.2	514.8	504.0	437.8	466.3	OK FOR 180 MPH	0	97.2	883.8	504.0	437.8	466.3	OK FOR 180 MPH
28	28	36	0	97.2	514.8	276.3	241.8	269.4	OK FOR 130 MPH	0	97.2	514.8	367.9	321.9	358.7	OK FOR 150 MPH	3	99.0	517.5	529.8	463.5	516.5	OK FOR 180 MPH	0	97.2	883.8	529.8	463.5	516.5	OK FOR 180 MPH
28	28	38	0	97.2	514.8	289.8	255.2	297.0	OK FOR 130 MPH	0	97.2	514.8	385.8	339.8	395.3	OK FOR 150 MPH	62	134.4	570.6	555.5	489.3	569.3	OK FOR 180 MPH	0	97.2	883.8	555.5	489.3	569.3	OK FOR 180 MPH
28	28	40	0	97.2	514.8	303.2	268.6	325.8	OK FOR 130 MPH	0	97.2	514.8	403.7	357.7	433.8	OK FOR 150 MPH	123	171.0	625.5	581.3	515.0	624.7	OK FOR 180 MPH	0	97.2	883.8	581.3	515.0	624.7	OK FOR 180 MPH
28	28	42	0	97.2	514.8	316.6	282.1	356.1	OK FOR 130 MPH	0	97.2	514.8	421.5	375.5	474.0	OK FOR 150 MPH	187	209.4	683.1	607.0	540.8	682.6	OK FOR 180 MPH	0	97.2	883.8	607.0	540.8	682.6	OK FOR 180 MPH
30	30	26	0	97.2	514.8	221.6	187.1	162.5	OK FOR 130 MPH	0	97.2	514.8	295.1	249.1	216.3	OK FOR 150 MPH	0	97.2	514.8	424.9	358.7	311.5	OK FOR 180 MPH	0	97.2	883.8	424.9	358.7	311.5	OK FOR 180 MPH
30	30	28	0	97.2	514.8	236.0	201.5	184.8	OK FOR 130 MPH	0	97.2	514.8	314.2	268.2	246.0	OK FOR 150 MPH	0	97.2	514.8	452.5	386.3	354.3	OK FOR 180 MPH	0	97.2	883.8	452.5	386.3	354.3	OK FOR 180 MPH
30	30	30	0	97.2	514.8	250.4	215.9	208.5	OK FOR 130 MPH	0	97.2	514.8	333.4	287.4	277.6	OK FOR 150 MPH	0	97.2	514.8	480.1	413.9	399.8	OK FOR 180 MPH	0	97.2	883.8	480.1	413.9	399.8	OK FOR 180 MPH
30	30	32	0	97.2	514.8	264.8	230.3	233.7	OK FOR 130 MPH	0	97.2	514.8	352.6	306.6	311.2	OK FOR 150 MPH	0	97.2	514.8	507.7	441.5	448.1	OK FOR 180 MPH	0	97.2	883.8	507.7	441.5	448.1	OK FOR 180 MPH
30	30	34	0	97.2	514.8	279.2	244.7	260.3	OK FOR 130 MPH	0	97.2	514.8	371.7	325.7	346.6	OK FOR 150 MPH	0	97.2	514.8	535.3	469.1	499.1	OK FOR 180 MPH	0	97.2	883.8	535.3	469.1	499.1	OK FOR 180 MPH
30	30	36	0	97.2	514.8	293.6	259.1	288.4	OK FOR 130 MPH	0	97.2	514.8	390.9	344.9	384.0	OK FOR 150 MPH	43	123.0	553.5	562.9	496.6	552.9	OK FOR 180 MPH	0	97.2	883.8	562.9	496.6	552.9	OK FOR 180 MPH
30	30	38	0	97.2	514.8	308.0	273.4	317.9	OK FOR 130 MPH	0	97.2	514.8	410.0	364.1	423.3	OK FOR 150 MPH	106	160.8	610.2	590.5	524.2	609.5	OK FOR 180 MPH	0	97.2	883.8	590.5	524.2	609.5	OK FOR 180 MPH
30	30	40	0	97.2	514.8	322.4	287.8	348.9	OK FOR 130 MPH	0	97.2	514.8	429.2	383.2	464.5	OK FOR 150 MPH	172	200.4	669.6	618.0	551.8	668.8	OK FOR 180 MPH	0	97.2	883.8	618.0	551.8	668.8	OK FOR 180 MPH
30	30	42	0	97.2	514.8	336.8	302.2	381.2	OK FOR 130 MPH	0	97.2	514.8	448.4	402.4	507.6	OK FOR 150 MPH	241	241.8	731.7	645.6	579.4	730.9	OK FOR 180 MPH	0	97.2	883.8	645.6	579.4	730.9	OK FOR 180 MPH
30	30	44	0	97.2	514.8	351.2	316.6	415.1	OK FOR 130 MPH	43																				

QT8040 EQUIPMENT PAD - ANCHORED

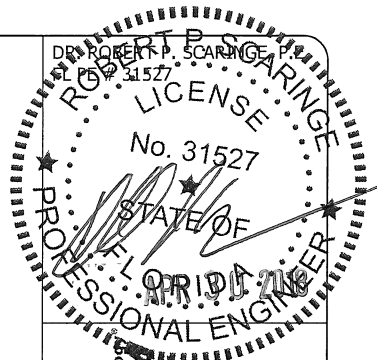
TABLE 3. MINIMUM WEIGHT OF EQUIPMENT REQUIRED FOR V_{ULT} = 130 MPH, 150 MPH, AND 180 MPH (EXPOSURE 'C') USING QT8040 EQUIPMENT PAD (FOR USE WITH RISK CATEGORY II STRUCTURE IN THE HIGH-VELOCITY HURRICANE ZONE)

EQUIPMENT DIMENSIONS			V _{ULT} = 130 MPH ALLOWABLE WIND SPEED (35.0 PSF ALLOWABLE WIND PRESSURE)							V _{ULT} = 150 MPH ALLOWABLE WIND SPEED (46.0 PSF ALLOWABLE WIND PRESSURE)							V _{ULT} = 180 MPH ALLOWABLE WIND SPEED (66.3 PSF ALLOWABLE WIND PRESSURE)						
L _u	W _u	H _u	MIN. WEIGHT OF EQUIPMENT	.6 X (UNIT + PAD)	DEAD LOAD MOMENT	F _{WIND, TOT}	F _{WIND, UNIT}	.6 X (WIND MOMENT)	DESIGN CHECK	MIN. WEIGHT OF EQUIPMENT	.6 X (UNIT + PAD)	DEAD LOAD MOMENT	F _{WIND, TOT}	F _{WIND, UNIT}	.6 X (WIND MOMENT)	DESIGN CHECK	MIN. WEIGHT OF EQUIPMENT	.6 X (UNIT + PAD)	DEAD LOAD MOMENT	F _{WIND, TOT}	F _{WIND, UNIT}	.6 X (WIND MOMENT)	DESIGN CHECK
IN	IN	IN	LB	LB	FT-LB	LB	LB	FT-LB	-	LB	LB	FT-LB	LB	LB	FT-LB	-	LB	LB	FT-LB	LB	LB	FT-LB	-
24	24	32	0	120.0	200.0	222.6	184.2	188.1	OK FOR 130 MPH	51	150.6	251.0	296.4	245.3	250.4	OK FOR 150 MPH	162	217.2	362.0	426.7	353.2	360.5	OK FOR 180 MPH
24	24	34	10	126.0	210.0	234.1	195.7	209.4	OK FOR 130 MPH	80	168.0	280.0	311.7	260.6	278.7	OK FOR 150 MPH	202	241.2	402.0	448.8	375.2	401.4	OK FOR 180 MPH
24	24	36	33	139.8	233.0	245.6	207.2	231.8	OK FOR 130 MPH	110	186.0	310.0	327.0	275.9	308.6	OK FOR 150 MPH	245	267.0	445.0	470.9	397.3	444.4	OK FOR 180 MPH
24	24	38	56	153.6	256.0	257.1	218.8	255.4	OK FOR 130 MPH	141	204.6	341.0	342.3	291.2	340.0	OK FOR 150 MPH	291	294.6	491.0	493.0	419.4	489.7	OK FOR 180 MPH
24	24	40	81	168.6	281.0	268.6	230.3	280.2	OK FOR 130 MPH	174	224.4	374.0	357.2	306.6	373.0	OK FOR 150 MPH	338	322.8	538.0	515.0	441.5	537.1	OK FOR 180 MPH
26	26	32	4	122.4	204.0	237.9	199.6	203.4	OK FOR 130 MPH	72	163.2	272.0	316.8	265.7	270.8	OK FOR 150 MPH	191	234.6	391.0	456.2	382.6	390.0	OK FOR 180 MPH
26	26	34	27	136.2	227.0	250.4	212.0	226.5	OK FOR 130 MPH	103	181.8	303.0	333.4	282.3	301.5	OK FOR 150 MPH	235	261.0	435.0	480.1	406.5	434.2	OK FOR 180 MPH
26	26	36	52	151.2	252.0	262.9	224.5	250.8	OK FOR 130 MPH	135	201.0	335.0	350.0	298.9	333.9	OK FOR 150 MPH	282	289.2	482.0	504.0	430.4	480.8	OK FOR 180 MPH
26	26	38	77	166.2	277.0	275.4	237.0	276.4	OK FOR 130 MPH	169	221.4	369.0	366.6	315.5	367.9	OK FOR 150 MPH	331	318.6	531.0	527.9	454.3	529.8	OK FOR 180 MPH
26	26	40	104	182.4	304.0	287.8	249.5	303.2	OK FOR 130 MPH	205	243.0	405.0	383.2	332.1	403.7	OK FOR 150 MPH	382	349.2	582.0	551.8	478.3	581.3	OK FOR 180 MPH
28	28	30	0	120.0	200.0	239.9	201.5	195.2	OK FOR 130 MPH	61	156.6	261.0	319.3	268.2	259.9	OK FOR 150 MPH	175	225.0	375.0	459.9	386.3	374.3	OK FOR 180 MPH
28	28	32	20	132.0	220.0	253.3	214.9	218.8	OK FOR 130 MPH	92	175.2	292.0	337.2	286.1	291.2	OK FOR 150 MPH	220	252.0	420.0	485.6	412.0	419.4	OK FOR 180 MPH
28	28	34	45	147.0	245.0	266.7	228.4	243.6	OK FOR 130 MPH	125	195.0	325.0	355.1	304.0	324.3	OK FOR 150 MPH	268	280.8	468.0	511.4	437.8	467.0	OK FOR 180 MPH
28	28	36	71	162.6	271.0	280.2	241.8	269.8	OK FOR 130 MPH	160	216.0	360.0	373.0	321.9	359.2	OK FOR 150 MPH	318	310.8	518.0	537.1	463.5	517.2	OK FOR 180 MPH
28	28	38	98	178.8	298.0	293.6	255.2	297.3	OK FOR 130 MPH	197	238.2	397.0	390.9	339.8	395.9	OK FOR 150 MPH	371	342.6	571.0	562.9	489.3	570.0	OK FOR 180 MPH
28	28	40	127	196.2	327.0	307.0	268.6	326.2	OK FOR 130 MPH	235	261.0	435.0	408.8	357.7	434.3	OK FOR 150 MPH							
28	28	42	157	214.2	357.0	320.5	282.1	356.4	OK FOR 130 MPH	276	285.6	476.0	426.6	375.5	474.5	OK FOR 150 MPH							
30	30	26	0	120.0	200.0	225.5	187.1	162.9	OK FOR 130 MPH	18	130.8	218.0	300.2	249.1	216.8	OK FOR 150 MPH	113	187.8	313.0	432.3	358.7	312.2	OK FOR 180 MPH
30	30	28	0	120.0	200.0	239.9	201.5	185.2	OK FOR 130 MPH	48	148.8	248.0	319.3	268.2	246.5	OK FOR 150 MPH	156	213.6	356.0	459.9	386.3	355.0	OK FOR 180 MPH
30	30	30	10	126.0	210.0	254.3	215.9	208.9	OK FOR 130 MPH	79	167.4	279.0	338.5	287.4	278.1	OK FOR 150 MPH	202	241.2	402.0	487.4	413.9	400.5	OK FOR 180 MPH
30	30	32	35	141.0	235.0	268.6	230.3	234.1	OK FOR 130 MPH	113	187.8	313.0	357.7	306.6	311.7	OK FOR 150 MPH	250	270.0	450.0	515.0	441.5	448.8	OK FOR 180 MPH
30	30	34	62	157.2	262.0	283.0	244.7	260.7	OK FOR 130 MPH	148	208.8	348.0	376.8	325.7	347.1	OK FOR 150 MPH	301	300.6	501.0	542.6	469.1	499.9	OK FOR 180 MPH
30	30	36	90	174.0	290.0	297.4	259.1	288.8	OK FOR 130 MPH	185	231.0	385.0	396.0	344.9	384.5	OK FOR 150 MPH	355	333.0	555.0	570.2	496.6	553.7	OK FOR 180 MPH
30	30	38	119	191.4	319.0	311.8	273.4	318.3	OK FOR 130 MPH	225	255.0	425.0	415.1	364.1	423.8	OK FOR 150 MPH							
30	30	40	150	210.0	350.0	326.2	287.8	349.2	OK FOR 130 MPH	266	279.6	466.0	434.3	383.2	465.0	OK FOR 150 MPH							
30	30	42	183	229.8	383.0	340.6	302.2	381.6	OK FOR 130 MPH	309	305.4	509.0	453.5	402.4	508.1	OK FOR 150 MPH							
30	30	44	216	249.6	416.0	355.0	316.6	415.4	OK FOR 130 MPH	354	332.4	554.0	472.6	421.5	553.1	OK FOR 150 MPH							
30	30	46	252	271.2	452.0	369.4	331.0	450.7	OK FOR 130 MPH														
32	32	28	0	120.0	200.0	253.3	214.9	197.3	OK FOR 130 MPH	64	158.4	264.0	337.2	286.1	262.6	OK FOR 150 MPH	179	227.4	379.0	485.6	412.0	378.2	OK FOR 180 MPH
32	32	30	24	134.4	224.0	268.6	230.3	222.6	OK FOR 130 MPH	97	178.2	297.0	357.7	306.6	296.4	OK FOR 150 MPH	228	256.8	428.0	515.0	441.5	426.7	OK FOR 180 MPH
32	32	32	50	150.0	250.0	284.0	245.6	249.5	OK FOR 130 MPH	133	199.8	333.0	378.1	327.0	332.1	OK FOR 150 MPH	279	287.4	479.0	544.5	470.9	478.3	OK FOR 180 MPH
32	32	34	79	167.4	279.0	299.3	261.0	277.9	OK FOR 130 MPH	171	222.6	371.0	398.5	347.4	369.9	OK FOR 150 MPH	334	320.4	534.0	573.9	500.3	532.7	OK FOR 180 MPH
32	32	36	109	185.4	309.0	314.7	276.3	307.8	OK FOR 130 MPH	211	246.6	411.0	419.0	367.9	409.8	OK FOR 150 MPH	391	354.6	591.0	603.3	529.8	590.1	OK FOR 180 MPH
32	32	38	140	204.0	340.0	330.1	291.7	339.3	OK FOR 130 MPH	253	271.8	453.0	439.4	388.3	451.7	OK FOR 150 MPH							
32	32	40	173	223.8	373.0	345.4	307.0	372.3	OK FOR 130 MPH	297	298.2	497.0	459.9	408.8	495.6	OK FOR 150 MPH							
32	32	42	208	244.8	408.0	360.8	322.4	406.8	OK FOR 130 MPH	343	325.8	543.0	480.3	429.2	541.6	OK FOR 150 MPH							
32	32	44	244	266.4	444.0	376.1	337.7	442.9	OK FOR 130 MPH	391	354.6	591.0	500.7	449.6	589.6	OK FOR 150 MPH							
32	32	46	281	288.6	481.0	391.5	353.1	480.5	OK FOR 130 MPH														
36	36	26	0	120.0	200.0	262.9	224.5	194.7	OK FOR 130 MPH	60	156.0	260.0	350.0	298.9	259.2	OK FOR 150 MPH	174	224.4	374.0	504.0	430.4	373.2	OK FOR 180 MPH
36	36	28	22	133.2	222.0	280.2	241.8	221.4	OK FOR 130 MPH	96	177.6	296.0	373.0	321.9	294.8	OK FOR 150 MPH	226	255.6	426.0	537.1	463.5	424.5	OK FOR 180 MPH
36	36	30	51	150.6	251.0	297.4	259.1	249.9	OK FOR 130 MPH	134	200.4	334.0	396.0	344.9	332.8	OK FOR 150 MPH	280	288.0	480.0	570.2	496.6	479.2	OK FOR 180 MPH
36	36	32	81	168.6	281.0	314.7	276.3	280.2	OK FOR 130 MPH	174	224.4	374.0	419.0	367.9	373.0	OK FOR 150 MPH	338	322.8	538.0	603.3	529.8	537.1	OK FOR 180 MPH
36	36	34	113	187.8	313.0	332.0	293.6	312.1	OK FOR 130 MPH	217	250.2	417.0	442.0	390.9	415.5	OK FOR 150 MPH	399	359.4	599.0	636.4	562.9	598.4	OK FOR 180 MPH
36	36	36	147	208.2	347.0	349.2	310.9	345.8	OK FOR 130 MPH	261	276.6	461.0	465.0	413.9	460.4	OK FOR 150 MPH							
36	36	38	182	229.2	382.0	366.5	328.1	381.2	OK FOR 130 MPH	309	305.4	509.0	488.0	436.9	507.5	OK FOR 150 MPH							
36	36	40	219	251.4	419.0	383.8	345.4	418.3	OK FOR 130 MPH	358	334.8	558.0	511.0	459.9	556.9	OK FOR 150 MPH							
36	36	42	258	274.8	458.0	401.1	362.7	457.2	OK FOR 130 MPH														
36	36	44	299	299.4	499.0	418.3	379.9	497.8	OK FOR 130 MPH														
36	36	46	341	324.6	541.0	435.6	397.2	540.1	OK FOR 130 MPH														
36	36	48	385	351.0	585.0	452.9	414.5	584.1	OK FOR 130 MPH														

PROCEDURE FOR USE OF TABLE 3 FOR EQUIPMENT PAD MODEL QT8040:

1. DETERMINE SIZE AND WEIGHT OF EQUIPMENT TO BE INSTALLED.
2. FIND APPROPRIATE EQUIPMENT SIZE IN TABLE. (IF UNIT SIZE IS BETWEEN LISTED DIMENSIONS, USE NEXT LARGER SIZE IN TABLE.)
3. FOR A GIVEN WIND SPEED, DETERMINE IF WEIGHT OF EQUIPMENT TO BE INSTALLED MEETS MIN. WEIGHT OF EQUIPMENT REQUIREMENT. IF SO, DESIGN IS OK FOR GIVEN WIND SPEED.

NOTE: IF EQUIPMENT DOES NOT MEET MIN. WEIGHT OF EQUIPMENT REQUIREMENT, OR IF NOTED OTHERWISE, ANCHORS ARE REQUIRED - SEE TABLE 4.



MAINSTREAM ENGINEERING
Solutions Through Advanced Technology

200 YELLOW PLACE
ROCKLEDGE, FL 32955
PH: (321) 631-3550
WWW.MAINSTREAM-ENGR.COM

QWIKHURRICANE™ PAD
EQUIPMENT TIE-DOWN SYSTEM FOR HVHZ

FBC 6TH EDITION (2017) PRODUCT APPROVAL
FL# 25896.1

REV	REMARKS	DRWN	CHKD	DATE
A	INITIAL RELEASE	A. CARPENTER	R. SCARINGE	04/30/2018

NOTICE: THIS DOCUMENT IS THE PROPERTY OF MAINSTREAM ENGINEERING CORPORATION AND SHALL NOT BE REPRODUCED IN WHOLE OR PART WITHOUT WRITTEN CONSENT OF MAINSTREAM ENGINEERING CORPORATION. ALTERATIONS, ADDITIONS,

QT8040 EQUIPMENT PAD - ANCHORED

TABLE 4. MINIMUM WEIGHT OF EQUIPMENT REQUIRED FOR V_{ULT} = 130 MPH, 150 MPH, AND 180 MPH (EXPOSURE 'C') USING QT8040 EQUIPMENT PAD AND ANCHORS (FOR USE WITH RISK CATEGORY II STRUCTURE IN THE HIGH-VELOCITY HURRICANE ZONE)

EQUIPMENT DIMENSIONS			V _{ULT} = 130 MPH ALLOWABLE WIND SPEED (35.0 PSF ALLOWABLE WIND PRESSURE) 2 ANCHORS REQUIRED							V _{ULT} = 150 MPH ALLOWABLE WIND SPEED (46.0 PSF ALLOWABLE WIND PRESSURE) 2 ANCHORS REQUIRED							V _{ULT} = 180 MPH ALLOWABLE WIND SPEED (66.3 PSF ALLOWABLE WIND PRESSURE) 2 ANCHORS REQUIRED							V _{ULT} = 180 MPH ALLOWABLE WIND SPEED (66.3 PSF ALLOWABLE WIND PRESSURE) 4 ANCHORS REQUIRED						
			MIN. WEIGHT OF EQUIPMENT	.6 X (UNIT + PAD)	DEAD LOAD + ANCHOR MOMENT	F _{WIND, TOT}	F _{WIND, UNIT}	.6 X (WIND MOMENT)	DESIGN CHECK	MIN. WEIGHT OF EQUIPMENT	.6 X (UNIT + PAD)	DEAD LOAD + ANCHOR MOMENT	F _{WIND, TOT}	F _{WIND, UNIT}	.6 X (WIND MOMENT)	DESIGN CHECK	MIN. WEIGHT OF EQUIPMENT	.6 X (UNIT + PAD)	DEAD LOAD + ANCHOR MOMENT	F _{WIND, TOT}	F _{WIND, UNIT}	.6 X (WIND MOMENT)	DESIGN CHECK	MIN. WEIGHT OF EQUIPMENT	.6 X (UNIT + PAD)	DEAD LOAD + ANCHOR MOMENT	F _{WIND, TOT}	F _{WIND, UNIT}	.6 X (WIND MOMENT)	DESIGN CHECK
L _u	W _u	H _u	LB	LB	FT-LB	LB	LB	FT-LB	-	LB	LB	FT-LB	LB	LB	FT-LB	-	LB	LB	FT-LB	LB	LB	FT-LB	-	LB	LB	FT-LB	LB	LB	FT-LB	-
24	24	32	0	120.0	610.0	222.6	184.2	188.1	OK FOR 130 MPH	0	120.0	610.0	296.4	245.3	250.4	OK FOR 150 MPH	0	120.0	610.0	426.7	353.2	360.5	OK FOR 180 MPH	0	120.0	1020.0	426.7	353.2	360.5	OK FOR 180 MPH
24	24	34	0	120.0	610.0	234.1	195.7	209.4	OK FOR 130 MPH	0	120.0	610.0	311.7	260.6	278.7	OK FOR 150 MPH	0	120.0	610.0	448.8	375.2	401.4	OK FOR 180 MPH	0	120.0	1020.0	448.8	375.2	401.4	OK FOR 180 MPH
24	24	36	0	120.0	610.0	245.6	207.2	231.8	OK FOR 130 MPH	0	120.0	610.0	327.0	275.9	308.6	OK FOR 150 MPH	0	120.0	610.0	470.9	397.3	444.4	OK FOR 180 MPH	0	120.0	1020.0	470.9	397.3	444.4	OK FOR 180 MPH
24	24	38	0	120.0	610.0	257.1	218.8	255.4	OK FOR 130 MPH	0	120.0	610.0	342.3	291.2	340.0	OK FOR 150 MPH	0	120.0	610.0	493.0	419.4	489.7	OK FOR 180 MPH	0	120.0	1020.0	493.0	419.4	489.7	OK FOR 180 MPH
24	24	40	0	120.0	610.0	268.6	230.3	280.2	OK FOR 130 MPH	0	120.0	610.0	357.7	306.6	373.0	OK FOR 150 MPH	0	120.0	610.0	515.0	441.5	537.1	OK FOR 180 MPH	0	120.0	1020.0	515.0	441.5	537.1	OK FOR 180 MPH
26	26	32	0	120.0	610.0	237.9	199.6	203.4	OK FOR 130 MPH	0	120.0	610.0	316.8	265.7	270.8	OK FOR 150 MPH	0	120.0	610.0	456.2	382.6	390.0	OK FOR 180 MPH	0	120.0	1020.0	456.2	382.6	390.0	OK FOR 180 MPH
26	26	34	0	120.0	610.0	250.4	212.0	226.5	OK FOR 130 MPH	0	120.0	610.0	333.4	282.3	301.5	OK FOR 150 MPH	0	120.0	610.0	480.1	406.5	434.2	OK FOR 180 MPH	0	120.0	1020.0	480.1	406.5	434.2	OK FOR 180 MPH
26	26	36	0	120.0	610.0	262.9	224.5	250.8	OK FOR 130 MPH	0	120.0	610.0	350.0	298.9	333.9	OK FOR 150 MPH	0	120.0	610.0	504.0	430.4	480.8	OK FOR 180 MPH	0	120.0	1020.0	504.0	430.4	480.8	OK FOR 180 MPH
26	26	38	0	120.0	610.0	275.4	237.0	276.4	OK FOR 130 MPH	0	120.0	610.0	366.6	315.5	367.9	OK FOR 150 MPH	0	120.0	610.0	527.9	454.3	529.8	OK FOR 180 MPH	0	120.0	1020.0	527.9	454.3	529.8	OK FOR 180 MPH
26	26	40	0	120.0	610.0	287.8	249.5	303.2	OK FOR 130 MPH	0	120.0	610.0	383.2	332.1	403.7	OK FOR 150 MPH	0	120.0	610.0	551.8	478.3	581.3	OK FOR 180 MPH	0	120.0	1020.0	551.8	478.3	581.3	OK FOR 180 MPH
28	28	30	0	120.0	610.0	239.9	201.5	195.2	OK FOR 130 MPH	0	120.0	610.0	319.3	268.2	259.9	OK FOR 150 MPH	0	120.0	610.0	459.9	386.3	374.3	OK FOR 180 MPH	0	120.0	1020.0	459.9	386.3	374.3	OK FOR 180 MPH
28	28	32	0	120.0	610.0	253.3	214.9	218.8	OK FOR 130 MPH	0	120.0	610.0	337.2	286.1	291.2	OK FOR 150 MPH	0	120.0	610.0	485.6	412.0	419.4	OK FOR 180 MPH	0	120.0	1020.0	485.6	412.0	419.4	OK FOR 180 MPH
28	28	34	0	120.0	610.0	266.7	228.4	243.6	OK FOR 130 MPH	0	120.0	610.0	355.1	304.0	324.3	OK FOR 150 MPH	0	120.0	610.0	511.4	437.8	467.0	OK FOR 180 MPH	0	120.0	1020.0	511.4	437.8	467.0	OK FOR 180 MPH
28	28	36	0	120.0	610.0	280.2	241.8	269.8	OK FOR 130 MPH	0	120.0	610.0	373.0	321.9	359.2	OK FOR 150 MPH	0	120.0	610.0	537.1	463.5	517.2	OK FOR 180 MPH	0	120.0	1020.0	537.1	463.5	517.2	OK FOR 180 MPH
28	28	38	0	120.0	610.0	293.6	255.2	297.3	OK FOR 130 MPH	0	120.0	610.0	390.9	339.8	395.9	OK FOR 150 MPH	0	120.0	610.0	562.9	489.3	570.0	OK FOR 180 MPH	0	120.0	1020.0	562.9	489.3	570.0	OK FOR 180 MPH
28	28	40	0	120.0	610.0	307.0	268.6	326.2	OK FOR 130 MPH	0	120.0	610.0	408.8	357.7	434.3	OK FOR 150 MPH	16	129.6	626.0	588.6	515.0	625.4	OK FOR 180 MPH	0	120.0	1020.0	588.6	515.0	625.4	OK FOR 180 MPH
28	28	42	0	120.0	610.0	320.5	282.1	356.4	OK FOR 130 MPH	0	120.0	610.0	426.6	375.5	474.5	OK FOR 150 MPH	74	164.4	684.0	614.4	540.8	683.3	OK FOR 180 MPH	0	120.0	1020.0	614.4	540.8	683.3	OK FOR 180 MPH
30	30	26	0	120.0	610.0	225.5	187.1	162.9	OK FOR 130 MPH	0	120.0	610.0	300.2	249.1	216.8	OK FOR 150 MPH	0	120.0	610.0	432.3	358.7	312.2	OK FOR 180 MPH	0	120.0	1020.0	432.3	358.7	312.2	OK FOR 180 MPH
30	30	28	0	120.0	610.0	239.9	201.5	185.2	OK FOR 130 MPH	0	120.0	610.0	319.3	268.2	246.5	OK FOR 150 MPH	0	120.0	610.0	459.9	386.3	355.0	OK FOR 180 MPH	0	120.0	1020.0	459.9	386.3	355.0	OK FOR 180 MPH
30	30	30	0	120.0	610.0	254.3	215.9	208.9	OK FOR 130 MPH	0	120.0	610.0	338.5	287.4	278.1	OK FOR 150 MPH	0	120.0	610.0	487.4	413.9	400.5	OK FOR 180 MPH	0	120.0	1020.0	487.4	413.9	400.5	OK FOR 180 MPH
30	30	32	0	120.0	610.0	268.6	230.3	234.1	OK FOR 130 MPH	0	120.0	610.0	357.7	306.6	311.7	OK FOR 150 MPH	0	120.0	610.0	515.0	441.5	448.8	OK FOR 180 MPH	0	120.0	1020.0	515.0	441.5	448.8	OK FOR 180 MPH
30	30	34	0	120.0	610.0	283.0	244.7	260.7	OK FOR 130 MPH	0	120.0	610.0	376.8	325.7	347.1	OK FOR 150 MPH	0	120.0	610.0	542.6	469.1	499.9	OK FOR 180 MPH	0	120.0	1020.0	542.6	469.1	499.9	OK FOR 180 MPH
30	30	36	0	120.0	610.0	297.4	259.1	288.8	OK FOR 130 MPH	0	120.0	610.0	396.0	344.9	384.5	OK FOR 150 MPH	0	120.0	610.0	570.2	496.6	553.7	OK FOR 180 MPH	0	120.0	1020.0	570.2	496.6	553.7	OK FOR 180 MPH
30	30	38	0	120.0	610.0	311.8	273.4	318.3	OK FOR 130 MPH	0	120.0	610.0	415.1	364.1	423.8	OK FOR 150 MPH	1	120.6	611.0	597.8	524.2	610.2	OK FOR 180 MPH	0	120.0	1020.0	597.8	524.2	610.2	OK FOR 180 MPH
30	30	40	0	120.0	610.0	326.2	287.8	349.2	OK FOR 130 MPH	0	120.0	610.0	434.3	383.2	465.0	OK FOR 150 MPH	61	156.6	671.0	625.4	551.8	669.6	OK FOR 180 MPH	0	120.0	1020.0	625.4	551.8	669.6	OK FOR 180 MPH
30	30	42	0	120.0	610.0	340.6	302.2	381.6	OK FOR 130 MPH	0	120.0	610.0	453.5	402.4	508.1	OK FOR 150 MPH	123	193.8	733.0	653.0	579.4	731.6	OK FOR 180 MPH	0	120.0	1020.0	653.0	579.4	731.6	OK FOR 180 MPH
30	30	44	0	120.0	610.0	355.0	316.6	415.4	OK FOR 130 MPH	0	120.0	610.0	472.6	421.5	553.1	OK FOR 150 MPH	187	232.2	797.0	680.6	607.0	796.5	OK FOR 180 MPH	0	120.0	1020.0	680.6	607.0	796.5	OK FOR 180 MPH
30	30	46	0	120.0	610.0	369.4	331.0	450.7	OK FOR 130 MPH	0	120.0	610.0	491.8	440.7	600.0	OK FOR 150 MPH	255	273.0	865.0	708.2	634.6	864.1	OK FOR 180 MPH	0	120.0	1020.0	708.2	634.6	864.1	OK FOR 180 MPH
32	32	28	0	120.0	610.0	253.3	214.9	197.3	OK FOR 130 MPH	0	120.0	610.0	337.2	286.1	262.6	OK FOR 150 MPH	0	120.0	610.0	485.6	412.0	378.2	OK FOR 180 MPH	0	120.0	1020.0	485.6	412.0	378.2	OK FOR 180 MPH
32	32	30	0	120.0	610.0	268.6	230.3	222.6	OK FOR 130 MPH	0	120.0	610.0	357.7	306.6	296.4	OK FOR 150 MPH	0	120.0	610.0	515.0	441.5	426.7	OK FOR 180 MPH	0	120.0	1020.0	515.0	441.5	426.7	OK FOR 180 MPH
32	32	32	0	120.0	610.0	284.0	245.6	249.5	OK FOR 130 MPH	0	120.0	610.0	378.1	327.0	332.1	OK FOR 150 MPH	0	120.0	610.0	544.5	470.9	478.3	OK FOR 180 MPH	0	120.0	1020.0	544.5	470.9	478.3	OK FOR 180 MPH
32	32	34	0	120.0	610.0	299.3	261.0	277.9	OK FOR 130 MPH	0	120.0	610.0	398.5	347.4	369.9	OK FOR 150 MPH	0	120.0	610.0	573.9	500.3	532.7	OK FOR 180 MPH	0	120.0	1020.0	573.9	500.3	532.7	OK FOR 180 MPH
32	32	36	0	120.0	610.0	314.7	276.3	307.8	OK FOR 130 MPH	0	120.0	610.0	419.0	367.9	409.8	OK FOR 150 MPH	0	120.0	610.0	603.3	529.8	590.1	OK FOR 180 MPH	0	120.0	1020.0	603.3	529.8	590.1	OK FOR 180 MPH
32	32	38	0	120.0	610.0	330.1	291.7	339.3	OK FOR 130 MPH	0	120.0	610.0	439.4	388.3	451.7	OK FOR 150 MPH	41	144.6	651.0	632.8	559.2	650.4	OK FOR 180 MPH	0	120.0	1020.0	632.8	559.2	650.4	OK FOR 180 MPH
32	32	40	0	120.0	610.0	345.4	307.0	372.3	OK FOR 130 MPH	0	120.0	610.0	459.9	408.8	495.6	OK FOR 150 MPH	105	183.0	715.0	662.2	588.6	713.7	OK FOR 180 MPH	0	120.0	1020.0	662.2	588.6	713.7	OK FOR 180 MPH
32	32	42	0	120.0	610.0	360.8	322.4	406.8	OK FOR 130 MPH	0	120.0	610.0	480.3	429.2	541.6	OK FOR 150 MPH	171	222.6	781.0	691.6	618.0	779.9	OK FOR 180 MPH	0	120.0	1020.0	691.6	618.0	779.9	OK FOR 180 MPH
32	32	44	0	120.0	610.0	376.1	337.7	442.9	OK FOR 130 MPH	0	120.0	610.0	500.7	449.6	589.6	OK FOR 150 MPH	240	264.0	850.0	721.1	647.5	849.1	OK FOR 180 MPH	0	120.0	1020.0	721.1	647.5	849.1	OK FOR 180 MPH
32	32	46	0	120.0	610.0	391.5	353.1	480.5	OK FOR 130 MPH	31	138.6	641.0	521.2	470.1	639.7	OK FOR 150 MPH	312	307.2	922.0	750.5	676.9	921.2	OK FOR 180 MPH	0						